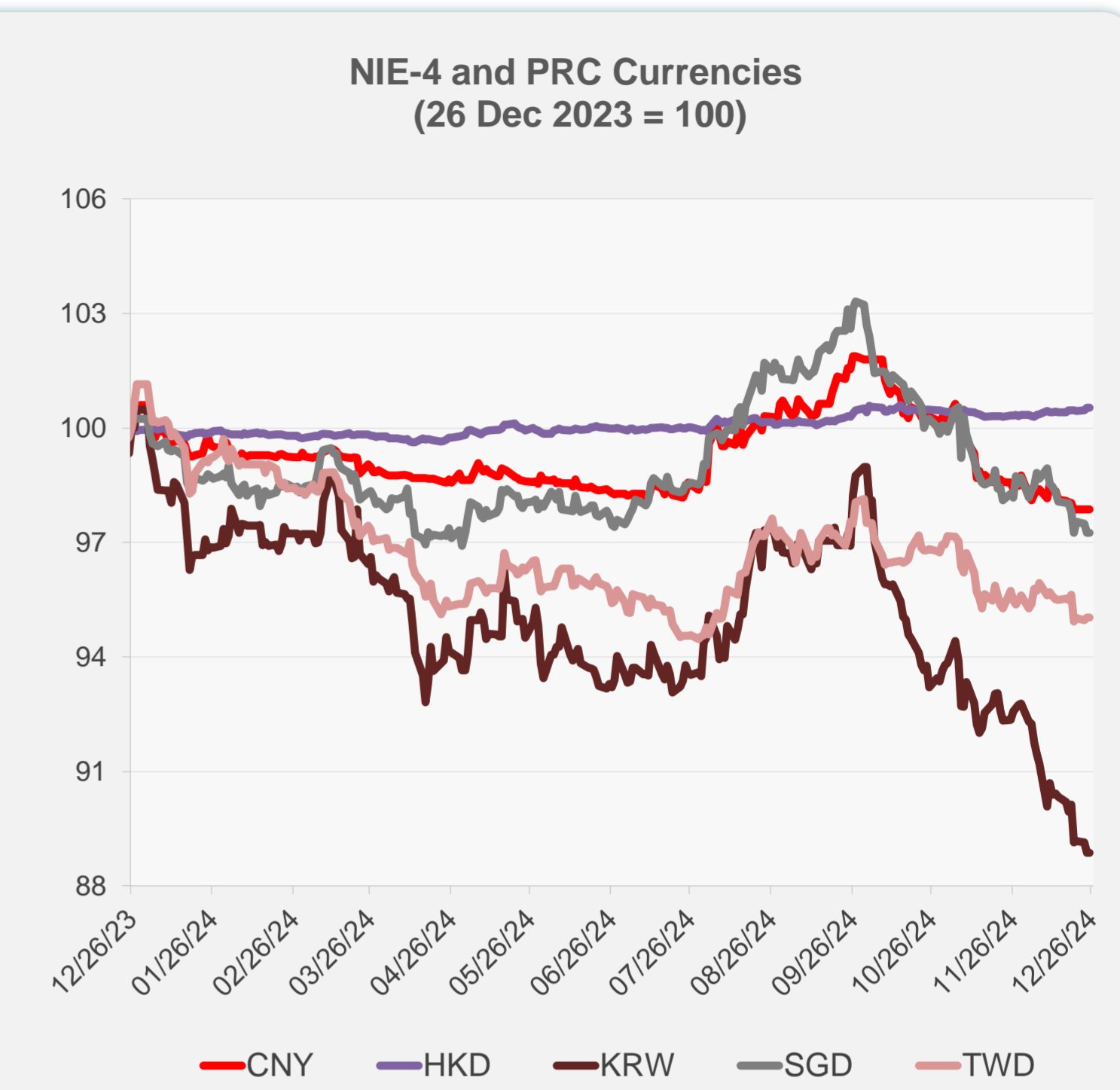
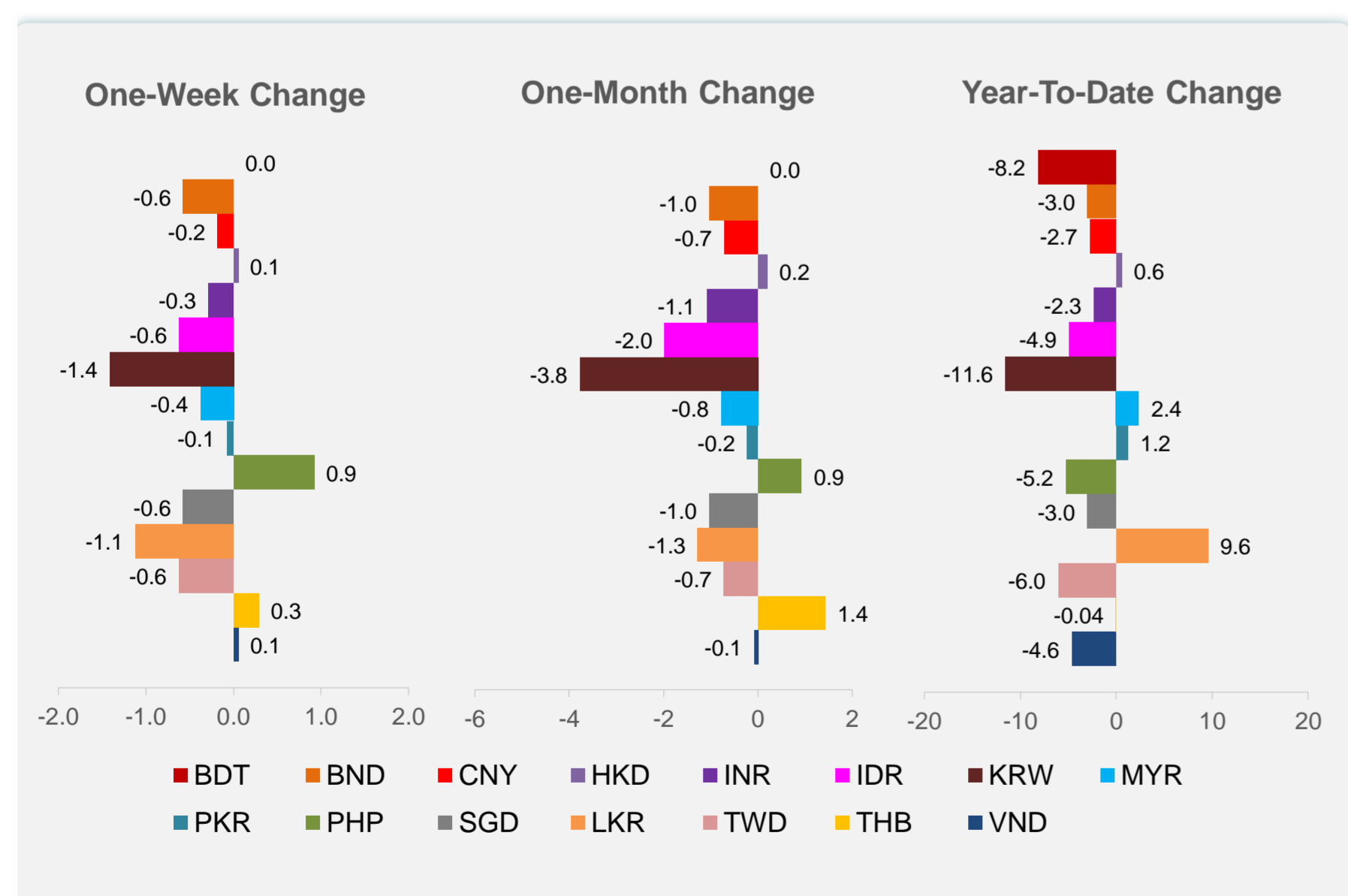
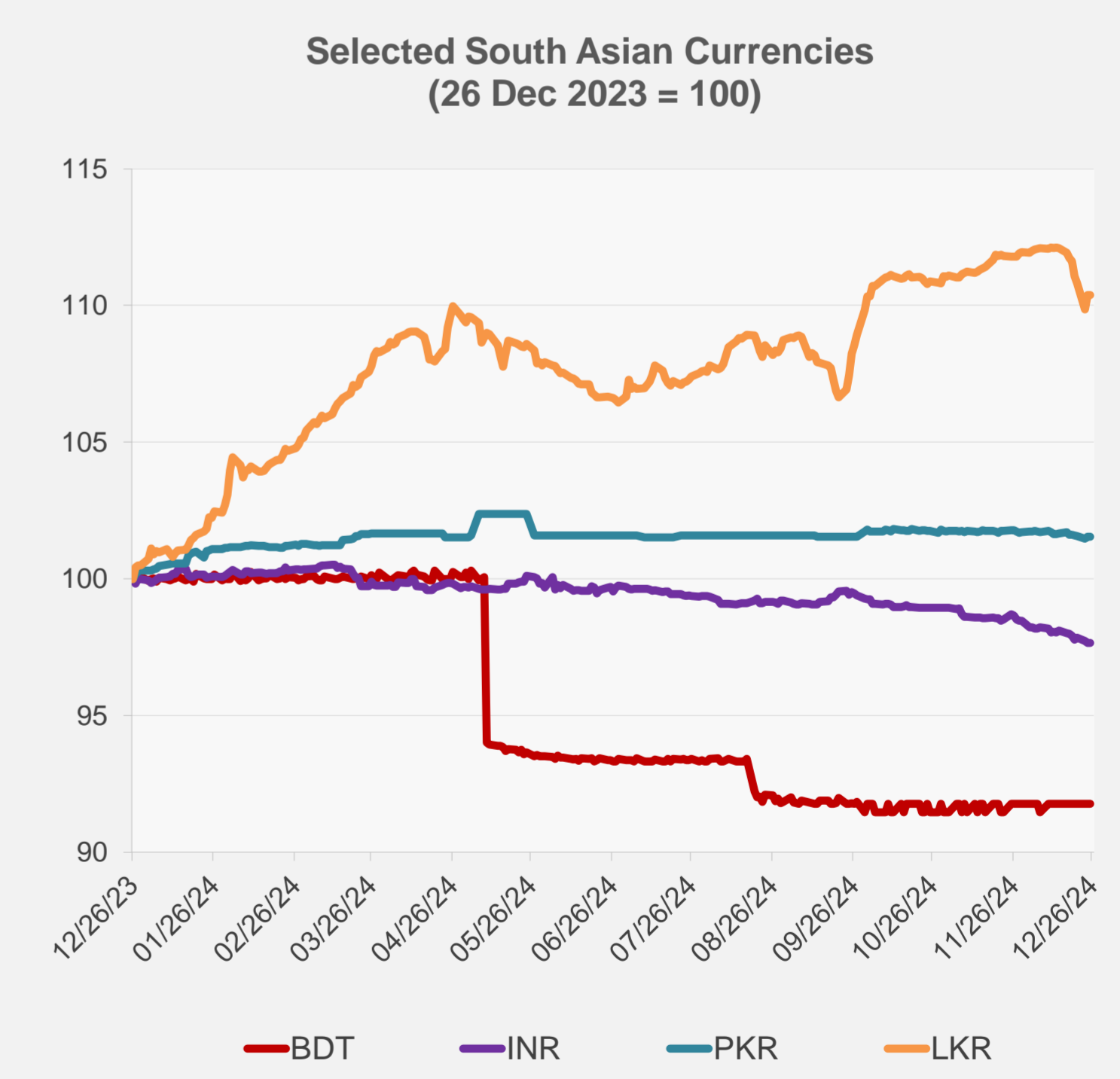
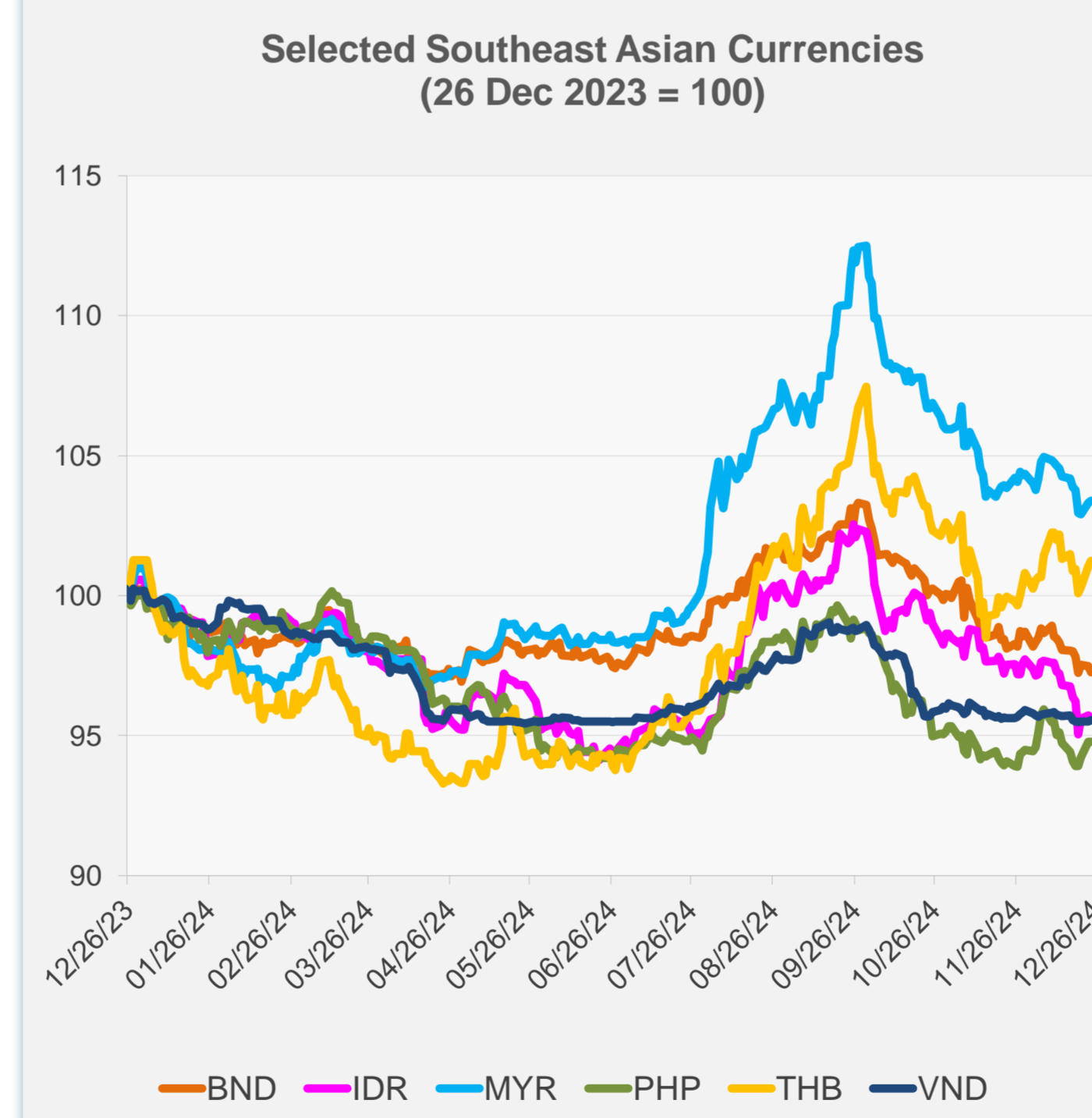


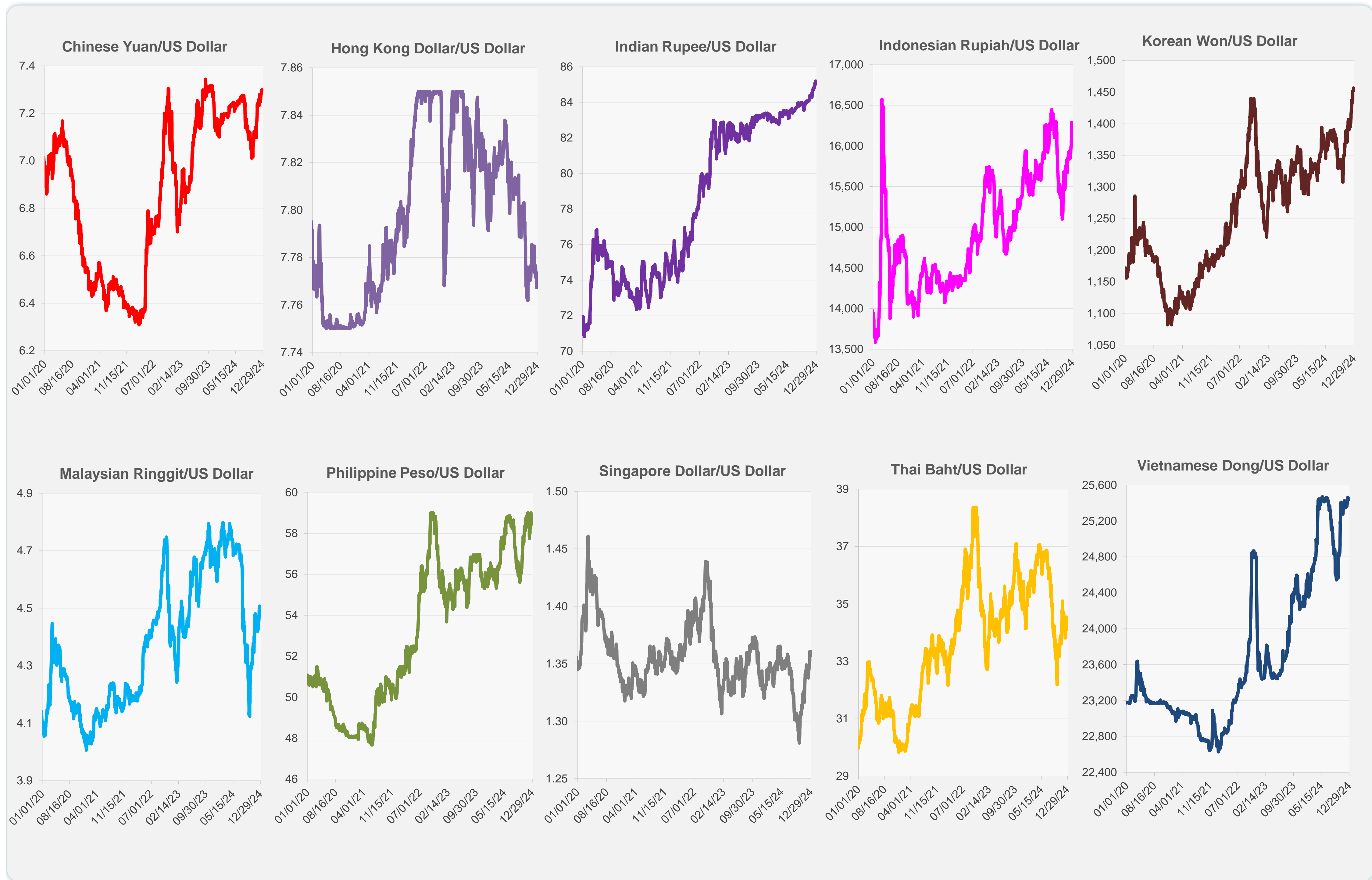
	Latest Closing	% change from Previous Day	% change from 01-Jan-24
Euro	0.96	0.00	-5.90
Japanese yen (JPY)	157.34	0.00	-10.46
Bangladeshi taka (BDT)	119.50	0.00	-8.16
Brunei dollar (BND)	1.36	0.00	-2.97
Chinese yuan (CNY)	7.30	0.00	-2.72
Hong Kong dollar (HKD)	7.77	0.00	0.57
Indian rupee (INR)	85.20	0.00	-2.31
Indonesian rupiah (IDR)	16,190.00	0.00	-4.90
Korean won (KRW)	1,456.50	0.00	-11.56
Malaysian ringgit (MYR)	4.49	0.00	2.38
Pakistan rupee (PKR)	278.40	0.00	1.23
Philippine peso (PHP)	58.45	0.00	-5.24
Singapore dollar (SGD)	1.36	0.00	-2.97
Sri Lanka rupee (LKR)	294.75	0.00	9.57
Taipei,China NT dollar (TWD)	32.68	0.00	-6.04
Thai baht (THB)	34.15	0.00	-0.04
Vietnamese dong (VND)	25,440.00	0.00	-4.61



NIE = Newly Industrialized Economies



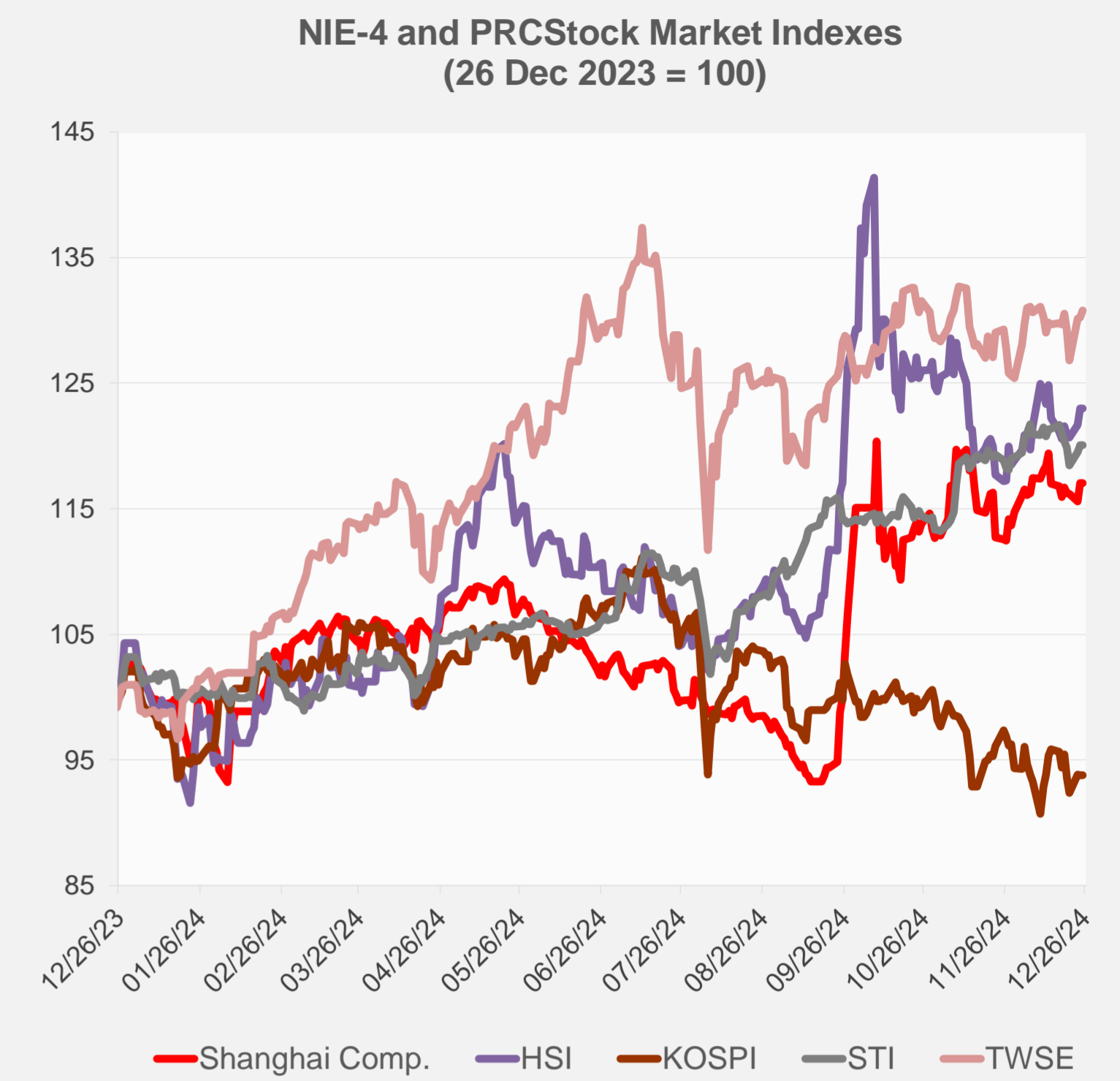
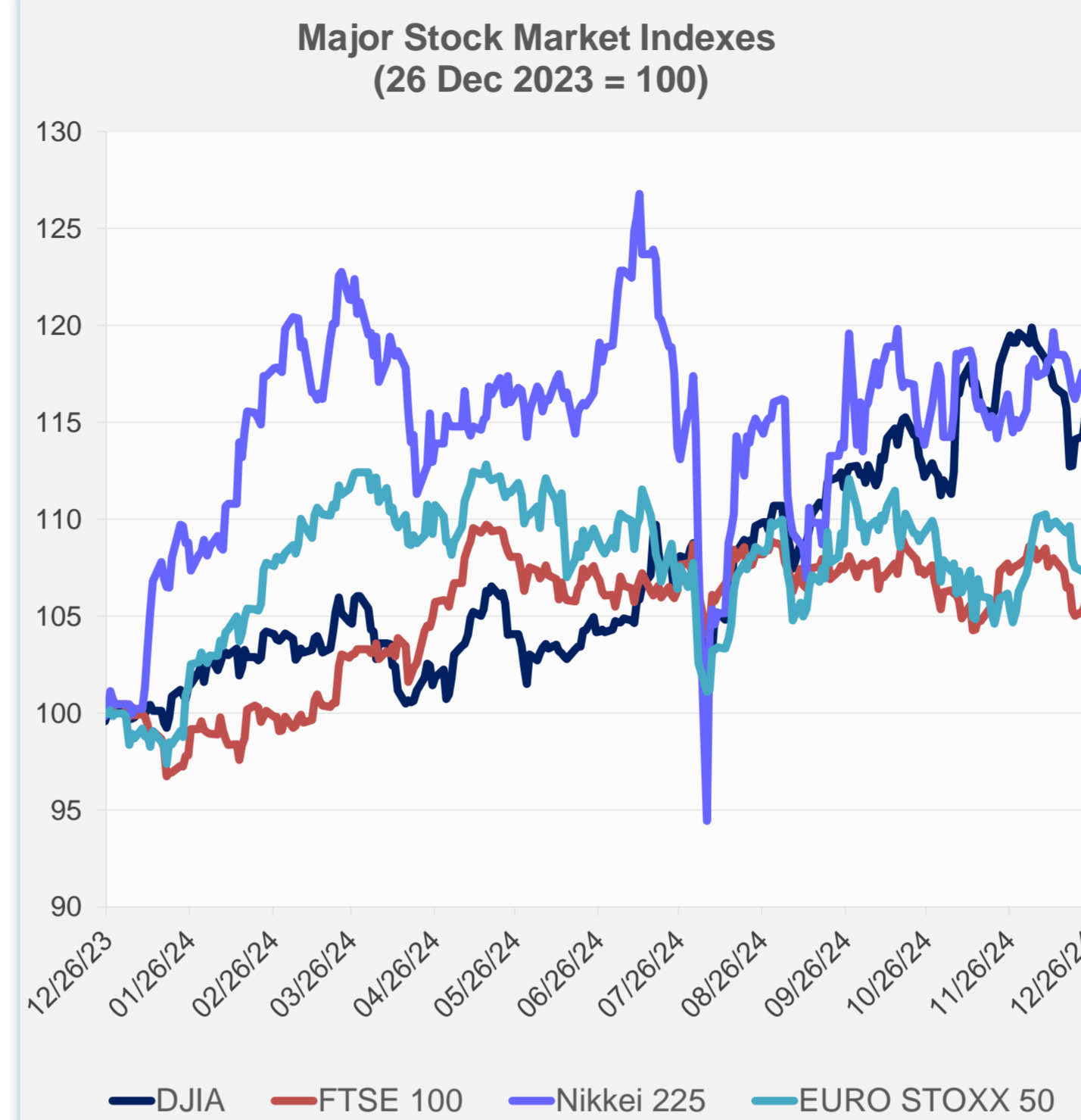
Note: Negative/Decreasing values indicate depreciation of local currency, and positive/increasing values indicate appreciation.
Source: ADB calculations using data from Haver Analytics.



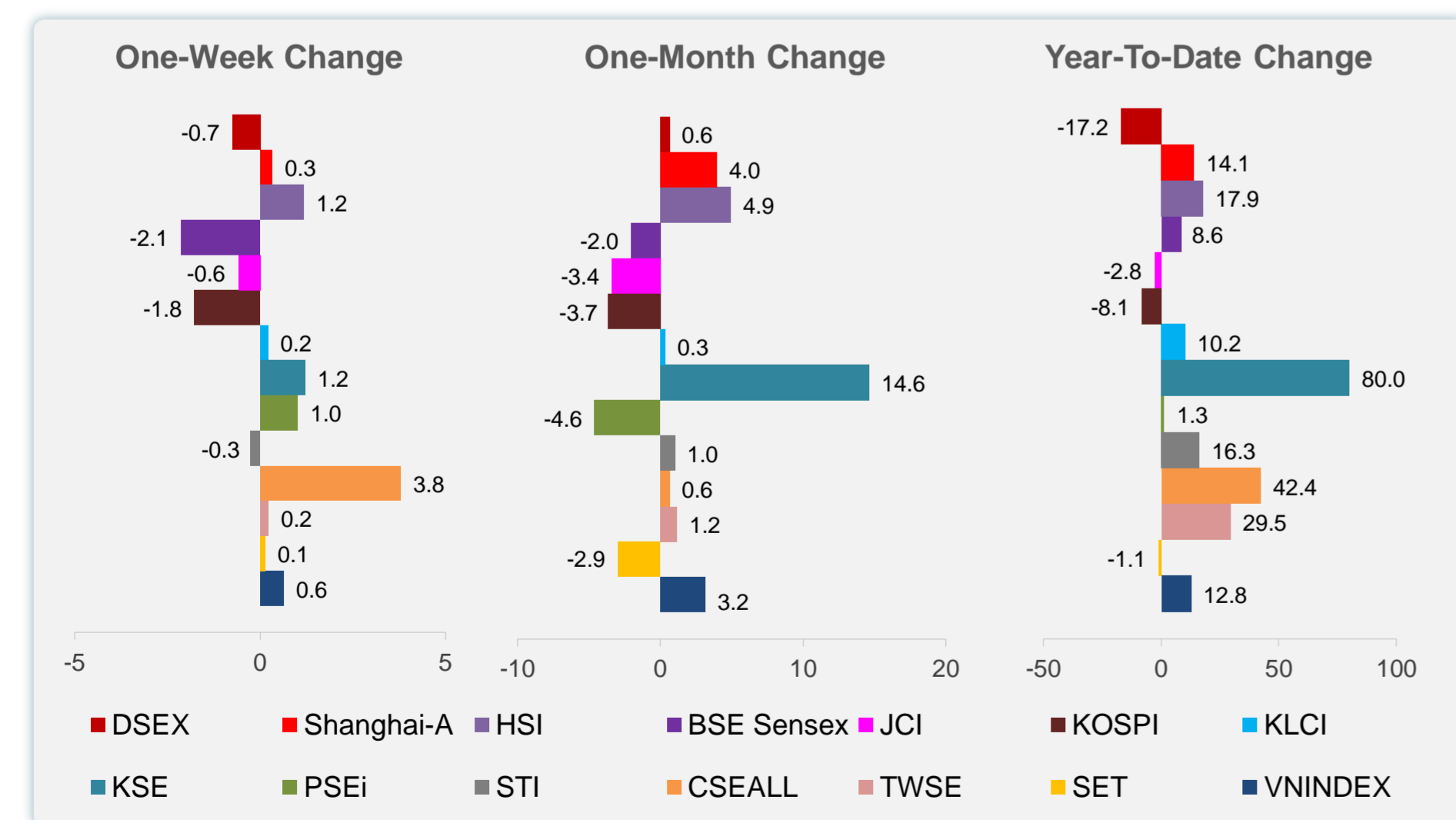
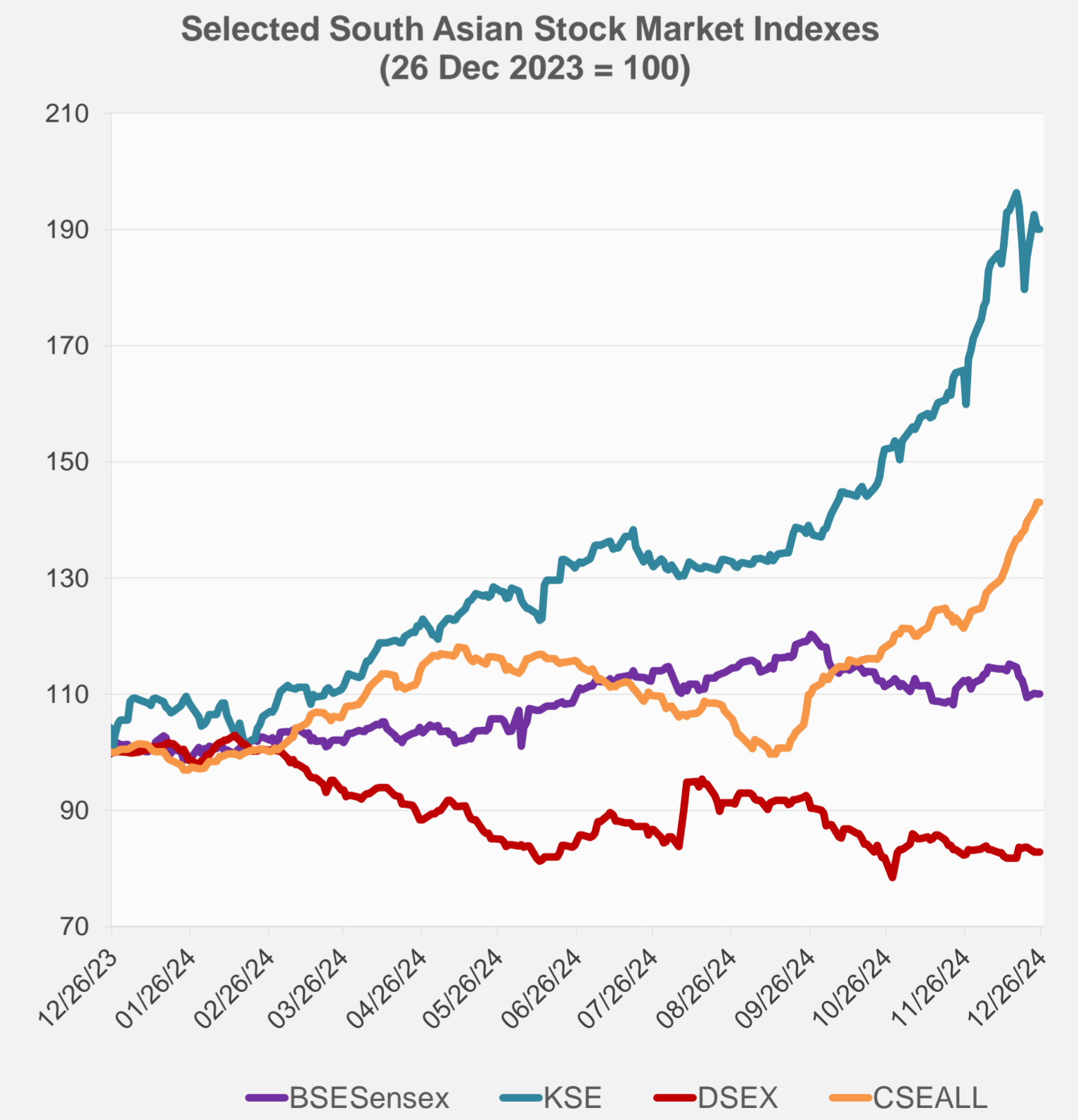
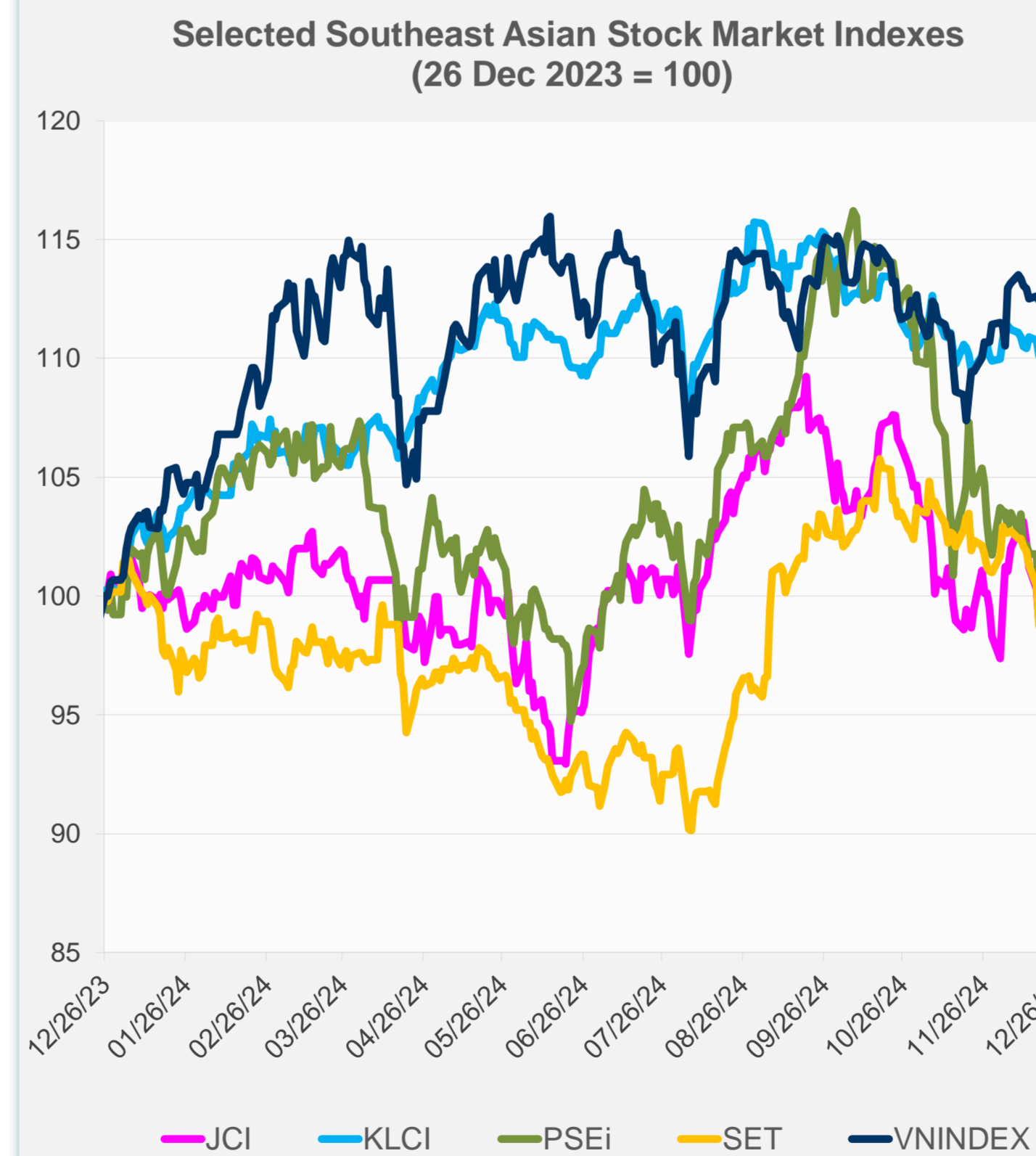
Source: Haver Analytics.

Daily Market Watch
STOCK INDEXES

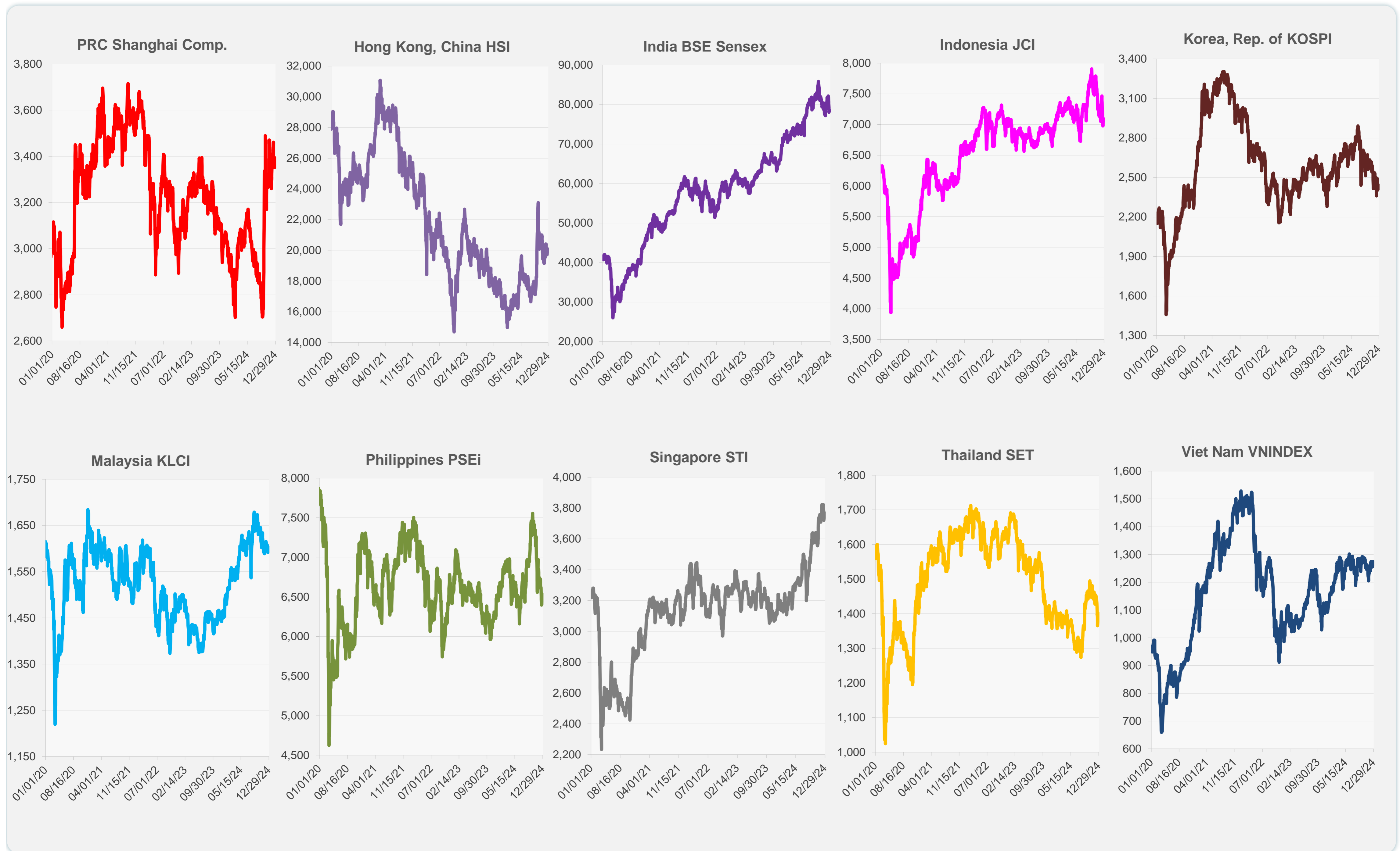
	Latest Closing	% change from Previous Day	% change from 01-Jan-24
US Dow Jones Ind Avg	43,297.03	0.00	14.88
US NASDAQ	20,031.13	0.00	33.44
US S&P 500	6,040.04	0.00	26.63
UK FTSE 100	8,136.99	0.00	5.22
EURO STOXX 50	4,857.86	0.00	7.44
Japan NIKKEI 225	39,130.43	0.24	16.93
Bangladesh DSEX	5,169.32	0.00	-17.20
PRC Shanghai Comp.	3,393.35	-0.01	14.06
Hong Kong, China HSI	20,098.29	0.00	17.90
India BSE Sensex	78,472.87	0.00	8.58
Indonesia JCI	7,065.75	0.00	-2.85
Korea, Rep. of KOSPI	2,440.52	0.00	-8.09
Malaysia KLCI	1,602.99	0.00	10.20
Pakistan KSE 100	112,414.80	0.00	80.00
Philippines PSEi	6,534.91	0.00	1.32
Singapore STI	3,769.55	0.00	16.33
Sri Lanka CSEALL	15,168.40	0.00	42.37
Taipei, China TWSE	23,220.13	0.43	29.50
Thailand SET	1,400.85	0.44	-1.06
Viet Nam VNINDEX	1,274.04	1.09	12.75



NIE = Newly Industrialized Economies



Sources: ADB calculations using data from CEIC Data Company and Haver Analytics.



Sources: CEIC Data Company and Haver Analytics.

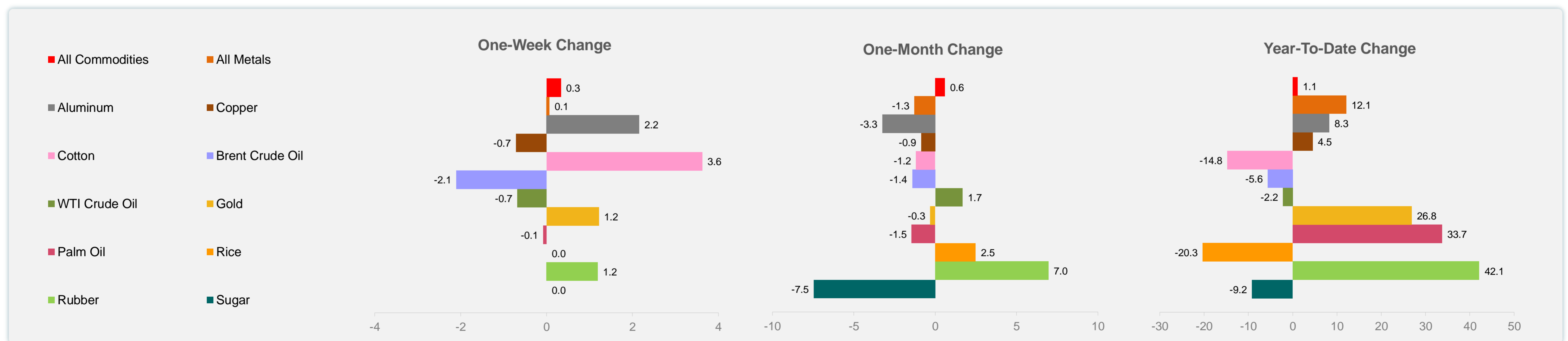
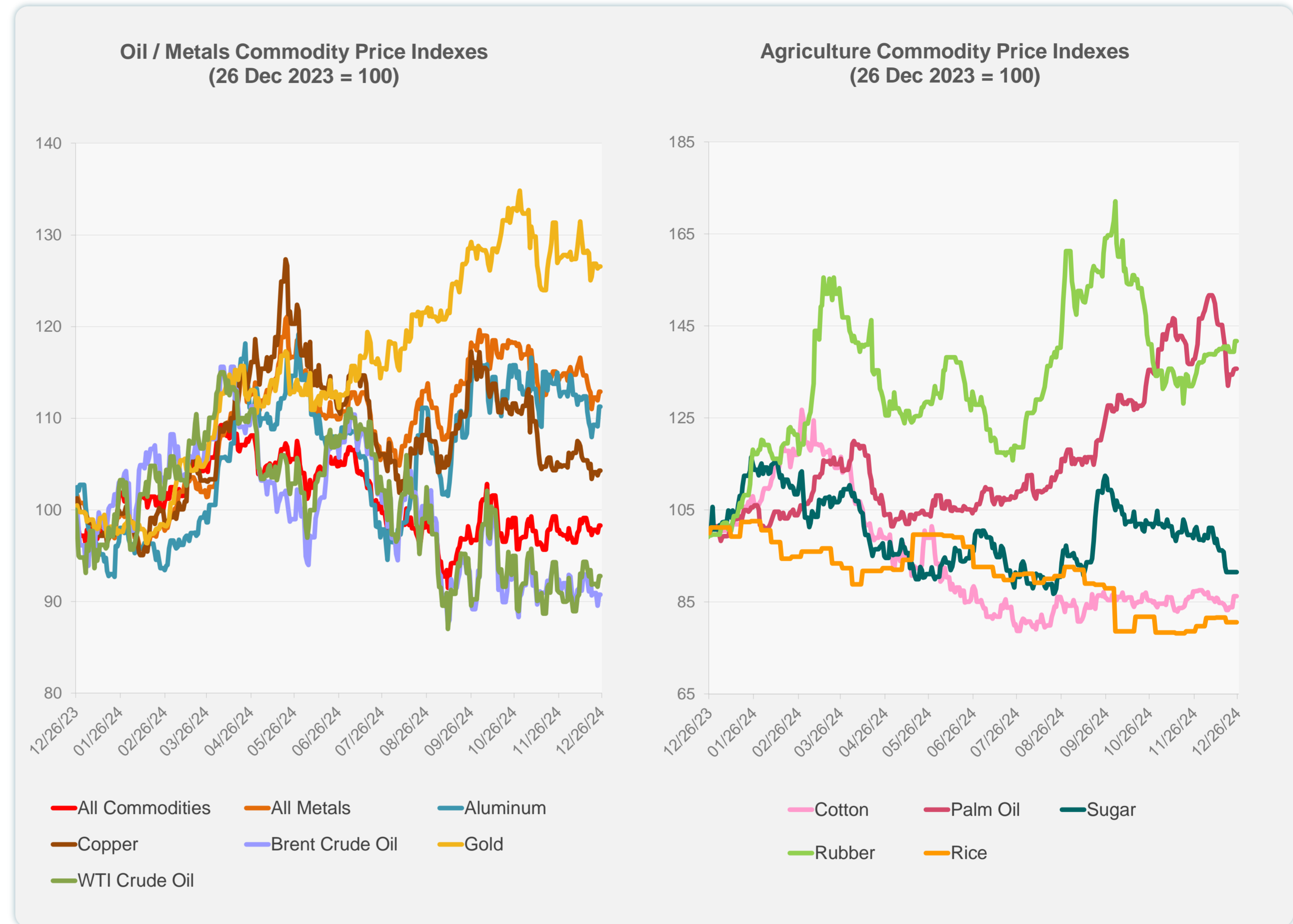
Daily Market Watch
COMMODITY PRICES

26 December 2024, 9:00 AM Manila

	Unit	Latest Closing	% change from Previous Day	% change from 01-Jan-24
S&P All Commodities	US\$	541.75	0.00	1.14
S&P All Metals	US\$	310.92	0.00	12.07
Aluminum	US\$/metric ton	2,539.49	0.00	8.27
Copper	US\$/metric ton	8,845.82	0.00	4.51
Cotton	US cents/lb	66.92	0.00	-14.75
Brent Crude Oil	US\$/barrel	73.24	0.00	-5.62
WTI Crude Oil	US\$/barrel	70.10	0.00	-2.16
Gold	US\$/troy oz	2,616.87	0.00	26.85
Palm Oil	US\$/metric tonne	1,081.69	0.00	33.71
Rice ¹	US\$/metric ton	537.00	0.00	-20.33
Rubber ²	US\$/kg	246.00	0.00	42.11
Sugar	US cents/lb	18.59	0.00	-9.18

¹ Latest closing price from 18 December 2024.

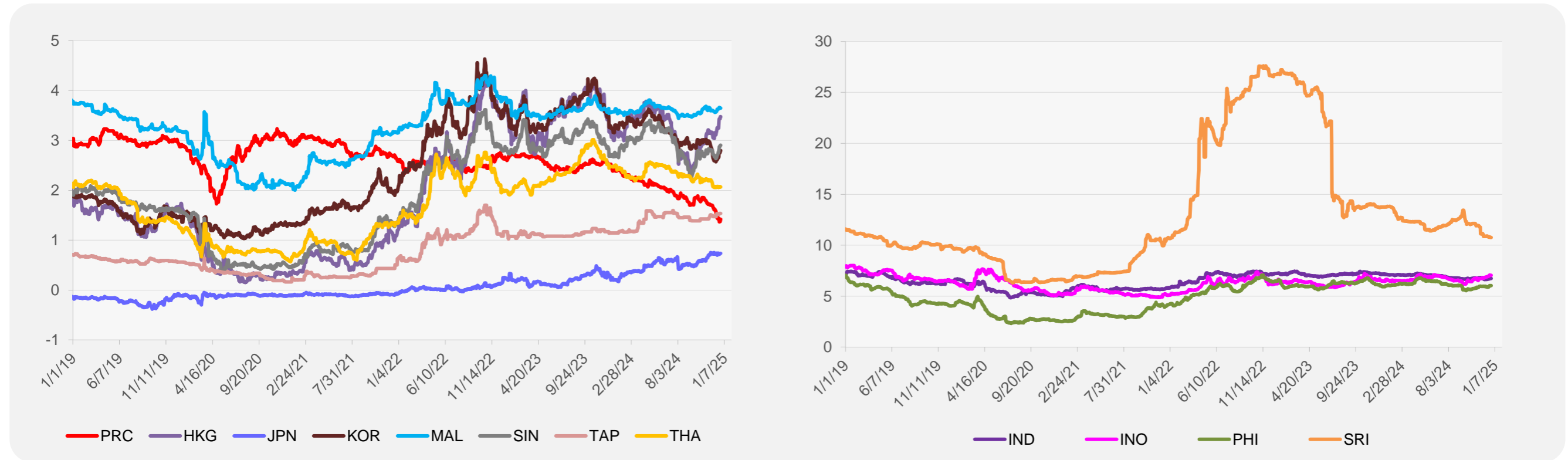
² Singapore Exchange, Ribbed Smoked Sheet Rubber.



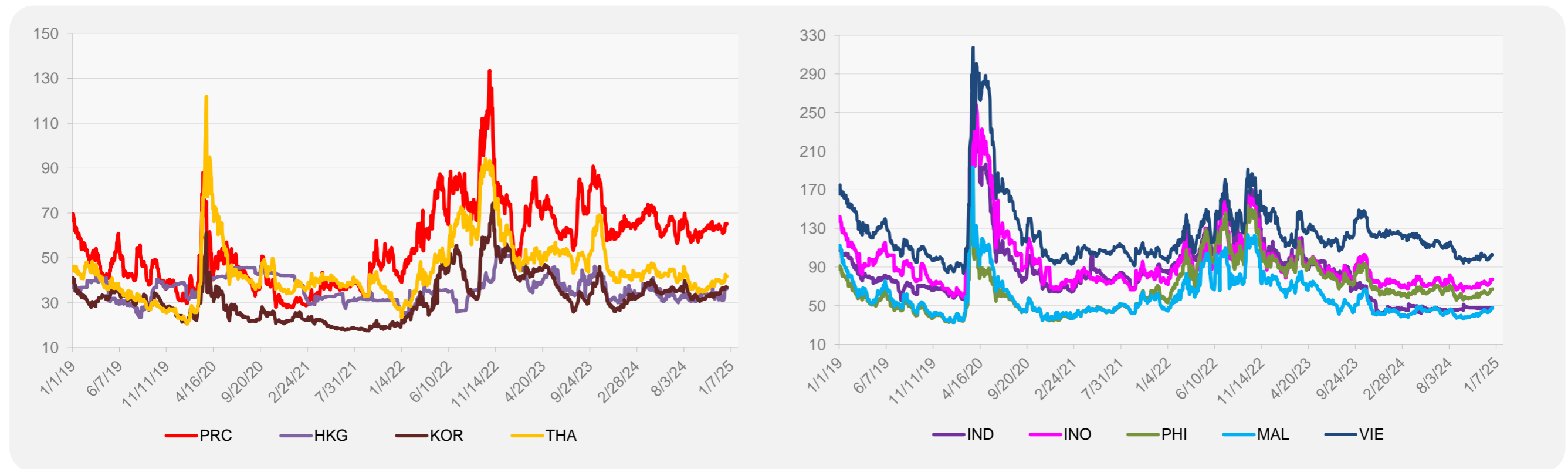
Source: ADB calculations using data from Bloomberg.

ASIA REGIONAL INTEGRATION CENTER
Regional Cooperation and Integration Division (ERICI)
Economic Research and Development Impact Department (ERDI)

5-YEAR LOCAL CURRENCY GOVERNMENT BOND YIELDS (%)



5-YEAR CREDIT DEFAULT SWAP¹



¹ In USD and based on sovereign bonds.
Source: ADB calculations using data from Bloomberg.